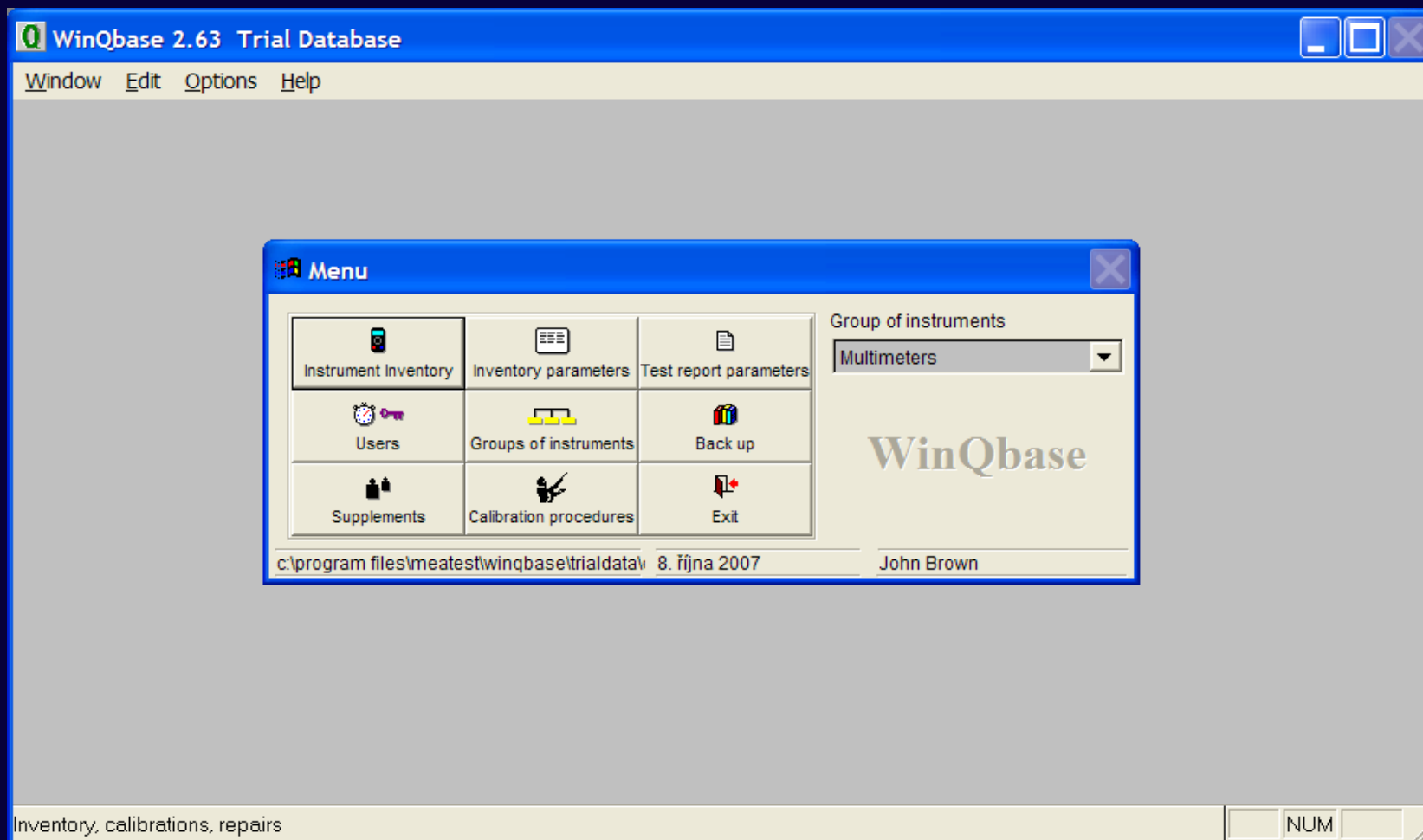


WinQbase



WinQbase

Basic features

Inventory of:

- all meters in calibration laboratory (company)
- calibration certificates
- calibration procedures

Other features:

- various methods of sorting of meters and calibrations
- 7 levels password protection
- creating, editing and printing of calibration certificates
- backup
- history of records

WinQbase

WinQbase

Registration card of meter A

Registration card of meter B

Calibration No.5

Calibration No.4

WinQbase

Registration card of instrument

Instrument Inventory INSTRUMENT INVENTORY Multimeters 1

Instrument Inventory		Calibrations	Supplements								
Type of inventory	Internal	Inventory serial No.	1								
Quantity	Electrical	Asset number	ZET236								
Category	Unit under test	Documentation	<input type="checkbox"/>								
Model	Metex 3800	HISTORY									
Manufacturer	Metex	Version	5.2.2002 7:47:49								
Users item 1	.	Author	John Brown								
Users item 2		<table border="1"><thead><tr><th>Calibrations</th><th>Date</th><th>Verify to</th><th>Result</th></tr></thead><tbody><tr><td></td><td>5.2.2002</td><td>5.2.2003</td><td>Failed</td></tr></tbody></table>		Calibrations	Date	Verify to	Result		5.2.2002	5.2.2003	Failed
Calibrations	Date	Verify to	Result								
	5.2.2002	5.2.2003	Failed								
First recorded on	5.2.2002	Traceability to									
Price	110.00	For information measurements									
Serial number	AB2365414	Periodical calibration not required									
Activated on	15.5.2000	Specification									
Discarded on	..	0.1%									
		Comment									
		3 1/2 digit multimeter									

Customer

Mr. Benin
BMT, a.s.
Cejl 20
Brno
602 00 Phone
05-8752513

Navigation: 1 record List


WinQbase

Calibration record

Instrument Inventory

INSTRUMENT INVENTORY **Multimeters**

Instrument Inventory **Calibrations** **Supplements**

Calibration No. Calibration procedure 

Inventory serial No. Report name

Temperature [°C] Result

Humidity [%] Operator


Test report [Users item 3](#)

Function	Range	Standard	UUT	Deviation	%spe	Allowed	Uncertainty	
VDC-2W	200 mV	20.0 mV	20.0 mV	10 uV	5	200 uV	62 uV	ok
VDC-2W	200 mV	180.0 mV	179.8 mV	-200 uV	-20	999 uV	66 uV	ok
VDC-2W	200 mV	-180.0 mV	-180.2 mV	-200 uV	-20	1001 uV	66 uV	ok
VDC-2W	2 V	0.200 V	0.200 V	0.30 mV	15	2.00 mV	0.58 mV	ok
VDC-2W	2 V	1.800 V	1.800 V	0.10 mV	1	10.00 mV	0.58 mV	ok

Comment

This is sample of test report. Eight calibration points were done, seven of the with OK result, one is fail.

Date received Date of calibration Calibration period Verify to

 1 record List

WinQbase

Supplements

Instrument Inventory [?] **INSTRUMENT INVENTORY** [Multimeters] [1]

Instrument Inventory	Calibrations	Supplements
Type of supplement Repair	Repair No. 1	
	Inventory serial No. 1	Current time 5.2.2002 7:55:08
	Date 5.2.2002	Comment

Content Import Export

Failure on current ranges. Meter doesn't measure.
Fail internal fuse 30A.
Fuse was exchanged. New calibration done.

Navigation: [Back] [Previous] [Next] [Forward] [Print] [Preview] [1 record List] [Add] [Edit] [Delete] [Browse] [Close]

WinQbase

