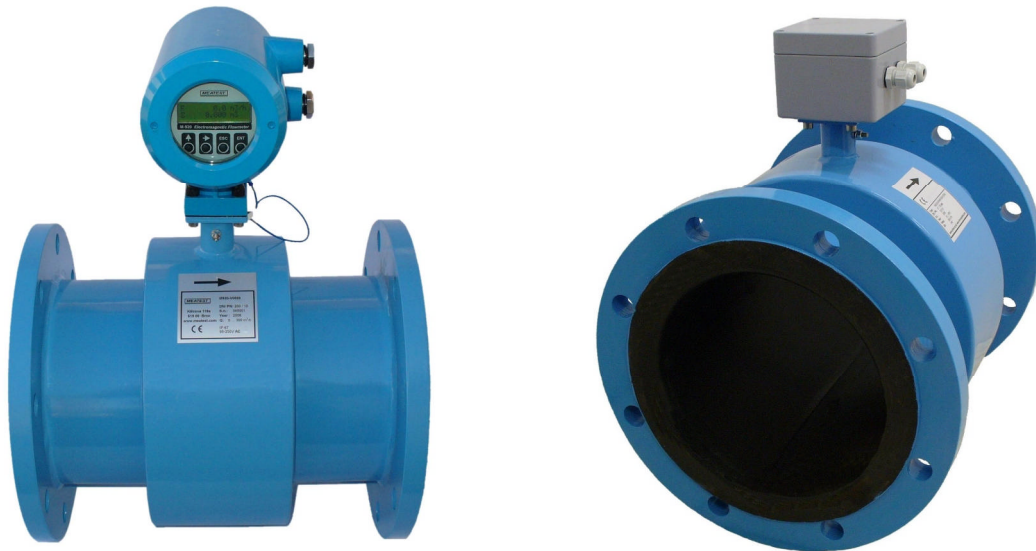


M-920 *Electromagnetic flowmeter*



Dimensions

Diameter DN [mm]	Length [mm]
10	150
15 - 80	200
100 - 125	250
150	300
200	350
250	450
300	500
350	550
400 - 600	600
700	700
800	800

Main features:

- Range of diameter 10 to 800 mm
- Compact version IP67, remote version sensor IP68
- Power supply 85...264VAC, 12, 24, 48VDC
- Empty pipe detection
- Excitation coils (liquid) temperature measurement
- Non-touch basic manual control with magnetic pointer
- Programmable datalogger and real time as standard
- Remote control RS232, RS485 (Modbus)
- 3 programmable digital outputs, digital input, analog output 4-20mA
- Dosing feature using digital input
- Pipe and electronic self diagnostic

Application:

- Water and wastewater flowrate and total volume measuring
- Chemical industry (acids, alkaline solutions)



Technical data

Nominal size	DN10 to DN800
Nominal pressure	PN10 to PN40 (depending on diameter)
Flow range	0.03 to 12 m/s (0.01 to 6000 l/s)
Accuracy	0.25 % (0.5 to 12 m/s) of reading value 0.003 m/s (0.03 to 0.5 m/s)
Maximal medium temperature	0 to 80°C (32 to 176°F) for rubber liner 0 to 150°C (32 to 302°F) for PTFE liner in remote version
Ambient temperature	-20 to 60 °C (-4 to 140°F)
Excitation coils temperature measurement	-20 to 150 °C (-4 to 302°F)
Power supply	<ul style="list-style-type: none"> • 85 ... 264 VAC, 50/60Hz • 12V, 24V, 48V DC as option
Power consumption	10 VA
Liner	<ul style="list-style-type: none"> • hard rubber • PTFE
Electrodes	<ul style="list-style-type: none"> • CrNi (stainless) steel 1.4571 • Hastelloy C276 • Tantalum
Measuring tube	Stainless steel 1.4201, dimensions according to DIN 17457
Flange	Steel 1.0402 or higher Dimensions according to EN1092, DIN2501 (BS 4504), ANSI B16.5, Sanitary (DIN11851 or Tri Clamp), flangeless wafer style
Protection category	Compact version: IP67 Remote version: sensor IP68, converter IP65 (optionally IP67)
Outputs	<ul style="list-style-type: none"> • Frequency 0 to 12 kHz with programmable flowrate and function • Pulse 0 to 200 Hz with programmable volume, function and pulse width • Relay contacts 100V/0.5A with programmable function • Current loop 4 to 20 mA with programmable flowrate and function
Input	Digital input with programmable function
Communication	RS485, RS232
Displayed values	<ul style="list-style-type: none"> • Flowrate (m3/h, l/s, US.Gal/min, Imperial.Gal/min user) • Volume (m3, l, US.Gal, Imperial.Gal, user) • Positive, total, negative and 2 auxiliary (clearable, daily) volume
Control	<ul style="list-style-type: none"> • Keyboard • Magnetic pointer • RS232 and RS485 (Modbus)
Low-flow cutoff	Programmable value
Time constant	Settable in range 1 to 20 s
Other features	<ul style="list-style-type: none"> • Test of excitation coils, status of pipe line and electronic unit • Empty pipe detection • Diagnostic of internal temperature and power supply voltages • Real time circuit for datalogging • Datalogger memory up to 15000 values (programmable sample rate) • Registration of min. and max. flowrate including date and time • Sensor has third grounding electrode as standard
Conformity requirements	<ul style="list-style-type: none"> • LVD (safety) according to EN 61010-1, EN61010-1/A2 • PED according to directive 97/23/EC • EMC according to EN 61000 part 3-2, 3-3, EN 61000 4-3, 4-4, 4-5, 4-6, 4-8, 4-11, EN 61000 part 6-2, EN 50081-1