

M - 602 *Programmable Resistance Decade*

Operation manual

MEATEST



Content

1.	USE OF THE INSTRUMENT	4
2.	CONTENTS OF DELIVERY	4
3.	TECHNICAL DATA	4
4.	PREPARATION FOR USE	7
4.1.	SWITCHING ON.....	7
4.2.	WARM-UP TIME.....	7
5.	DESCRIPTION.....	8
5.1.	FRONT PANEL	8
	Keyboard.....	8
	Display.....	8
	Output terminals	8
5.2.	REAR PANEL.....	9
6.	OPERATION	9
6.1.	SWITCH ON AND OFF.....	9
6.2.	DECADE CONNECTION	9
6.3.	STANDARD MODE – NUMERICAL KEYBOARD	10
6.4.	STANDARD MODE – CURSOR KEYBOARD	10
6.5.	SETUP MODE.....	11
6.6.	CALIBRATION MODE.....	14
7.	PERFORMANCE VERIFICATION TEST	16
8.	REMOTE CONTROL.....	18
8.1.	COMMANDS.....	18
8.2.	COMMAND LIST	18
8.3.	REMOTE CONTROL RS232	21
8.4.	REMOTE CONTROL IEEE488 (OPTIONALY).....	21
8.5.	DEMO PROGRAM	22
9.	MODULE 19” (VERSION M602-VXX1X)	23
10.	TABLE VERSION WITH HOLDER (VERSION M602-VXX2X).....	23
11.	ELECTRIC FUNCTION.....	23
12.	MECHANICAL CONSTRUCTION	24
12.1.	BATTERY MAINTENANCE (VERSION M602-VXXX1)	24
12.2.	BATTERY REPLACEMENT (VERSION M602-VXXX1)	24
13.	ORDERING INFORMATION – OPTIONS.....	25

1. Use of the instrument

Resistance decade M-602 is designed for checking of parameters of resistance meters and regulators and process meters, which use external resistance sensors for non-electric quantity measuring. Set resistance value is created via appropriate combination of physical resistors. Decade is equipped with build-in function of direct simulation of most frequent temperature Pt and Ni sensors. Low thermal voltage relays and stable resistors are used as main parts of the decade. Actual set values are displayed on the front panel display. Resistance decade is supplied from external power line adapter or internal battery. M-602 is sophisticated instrument with its own re-calibration procedure. The procedure enables to correct any deviation in resistance without any mechanical adjusting.

Instrument is especially suitable for automatic testing procedures. RS232 line (optionally IEEE488 bus) is used for connecting decade to the computer.

2. Contents of delivery

RS232 version

Resistance decade M602-V1xxx
Power line adapter
Cable RS-232
Demo program
User's manual
Test report

IEEE488 version

Resistance decade M602-V2xxx
Power line adapter
Demo program
User's manual
Test report

3. Technical data

Only values, functions, ranges with signed accuracy in relative or absolute expression or where limits are specified, are guaranteed.

Resistance range	:	10 Ω - 300 k Ω (basic version) 100 m Ω - 10 M Ω (version M602A) SHORT, OPEN terminals (version M602-Vx1xx only)
Pt sensor temperature simulation	:	-200.000 $^{\circ}\text{C}$... 850.000 $^{\circ}\text{C}$ (-328 $^{\circ}\text{F}$... 1562 $^{\circ}\text{F}$)
Ni sensor temperature simulation	:	-60.000 $^{\circ}\text{C}$... 300.000 $^{\circ}\text{C}$ (-76 $^{\circ}\text{F}$... 572 $^{\circ}\text{F}$)
Type of temperature sensors	:	Pt100 ... Pt1000, Ni100 ... Ni1000 (basic version) Pt10 ... Pt20000, Ni10 ... Ni20000 (version M602A)
Resolution	:	0.001 Ω for (10.000 – 300.000 Ω) /basic version 0.01 Ω for (300.01 – 1000.00 Ω) 0.1 Ω for (1000.1 – 3000.0 Ω) 1 Ω for (3000 – 10000 Ω) 0.01 k Ω for (10.00 – 30.00 k Ω) 0.1 k Ω for (30.0 – 100.0 k Ω) 1 k Ω for (100 – 300 k Ω)

		0.00001 Ω	for (0.10000 – 2.00000 Ω) /version M602A
		0.0001 Ω	for (2.0001 – 20.0000 Ω)
		0.001 Ω	for (20.001 – 200.000 Ω)
		0.01 Ω	for (200.01 – 2000.00 Ω)
		0.1 Ω	for (2000.1 – 20000.0 Ω)
		1 Ω	for (20001 – 200000 Ω)
		0.01 k Ω	for (200.01 – 2000.00 k Ω)
		0.1 k Ω	for (2000.1 – 10000.0 k Ω)
		0.01 $^{\circ}\text{C}$	for Pt, Ni
Pt temperature standards	:	IEC 751 (1,3850 for IPTS68)	
		IEC 751 (1,3851 for ITS90)	
		US (US/JIS) (1,3916)	
Ni temperature standards	:	DIN 43760 (6180)	
Temperature coefficient	:	< 25 ppm/ $^{\circ}\text{C}$	
Maximal dissipation power	:	2 W	
Maximal current	:	0.6 A	
Maximal voltage	:	120 Vdc, 50 Vac	
Connection of output terminals	:	2, 4 wire	
Connection of temperature sensors	:	2, 3 or 4 wire	
Reaction time *	:	4 ms	
Terminals	:	instrument terminals diameter 4mm, gold plated	
Interface	:	RS232 as standard (IEEE488 optionally)	
Power supply	:	power line adapter 15VDC/2A 100 – 240 V/50Hz (internal battery 12 V type B-WP 1.9-12 optionally)	
Operating period from battery	:	6 hours	
Reference temperature	:	+18 $^{\circ}\text{C}$... +28 $^{\circ}\text{C}$	
Working temperature	:	+5 $^{\circ}\text{C}$... +40 $^{\circ}\text{C}$	
Storing temperature	:	-10 $^{\circ}\text{C}$... +50 $^{\circ}\text{C}$	
Housing	:	ALU	
Dimensions (table version)	:	W 364 mm, H 111 mm, D 316 mm (without holder)	
Dimensions (19" module)	:	W 483 mm, H 133 mm, D 316 mm	
Weight	:	4.5 kg	
Isolation resistance between output terminals and housing	:	> 2 G Ω (at 500V DC)	

* *Reaction time means time interval between setting up value from front panel or receiving command from remote control bus and settling set-up value on output terminals.*

Notes:

- *Only data shown with tolerance or with band of limits are tested. All other values have informative character.*
- *During over-switching, resistance circuit may be opened for a period about 1ms (typ. 300us).*

Accuracy

Specified accuracy is valid after 10 minutes warm up in temperature range $23 \pm 5^\circ\text{C}$. Uncertainties include long-term stability, temperature coefficient, linearity, load and line regulation and traceability of factory to National calibration standards. Accuracies assigned in % are related to the set value. Specified accuracy is one-year accuracy.

Resistance accuracy (basic version)

Range	Accuracy
10.000 Ω - 199.999 Ω	0.05 % + 15 m Ω
200.000 Ω - 9.999 k Ω	0.02 %
10.000 k Ω - 50.0 k Ω	0.05 %
50.1 k Ω - 100.0 k Ω	0.1 %
101 k Ω - 300 k Ω	0.5 %

Resistance accuracy (version M602A)

Range	Accuracy
0.1 Ω - 199.999 Ω	0.05 % + 15 m Ω
200.000 Ω - 2.00000 M Ω	0.02 %
2.0001 M Ω - 10.0000 M Ω	0.05 %

Pt temperature sensor simulation accuracy

Temperature range	Pt10-Pt200	Pt201-Pt20000
-200.00 ... -0.01 $^\circ\text{C}$	0.2 $^\circ\text{C}$	0.2 $^\circ\text{C}$
0.00 ... 850.00 $^\circ\text{C}$	0.2 $^\circ\text{C}$	0.2 $^\circ\text{C}$

Ni temperature sensor simulation accuracy

Temperature range	Ni10-Ni200	Ni201-Ni20000
-60.00 ... -0.01 $^\circ\text{C}$	0.2 $^\circ\text{C}$	0.1 $^\circ\text{C}$
0.00 ... 300.00 $^\circ\text{C}$	0.1 $^\circ\text{C}$	0.1 $^\circ\text{C}$

Short and Open simulation (version M602-Vx1xx only)

When function Short is selected, output resistance is lower than 60 m Ω . Maximal allowed current is 500 mA.

When function Open is selected, output resistance is higher than 1 G Ω . Maximal allowed voltage is 120 Vdc / 50 Vac.

Note:

Resistance values in range 0.1 W - 10 MW are calibrated absolutely. Resistance value is not defined against SHORT position. Functions Short and Open positions are intended only for functional checking of tested instrument.

4. Preparation for use

M-602 Resistance decade is supplied from external power line adapter. Range of power line voltage is from 100 V to 240 V 50/60 Hz. M-602 is predestinate to work in temperature range +5 ... +40 °C. Instrument is aimed for use in horizontal or slope position.

After unpacking put the instrument on flat desk. If the instrument was stored out of range of reference temperatures, let it stabilize for one hour.

4.1. Switching on

Connect the power line adapter to the decade and push the POWER button. After switching on internal tests are performed for approx. 3s. On the display type name of the instrument and manufacturer are displayed during internal test. After finishing, setting to the position before last switching off is performed. Factory setting is resistance mode, value 100Ω.

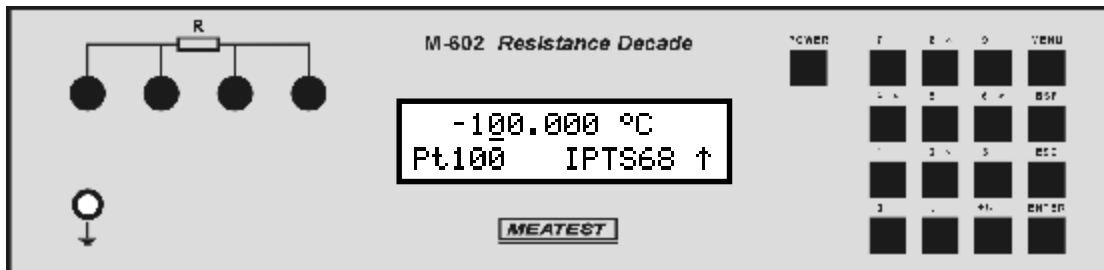
Decade enables to store to internal memory the “Startup state”. See chapter “Operation” for more details.

4.2. Warm-up time

Decade can operate immediately after switching on. After 10 min. warm-up period it meets specified accuracy. During warm-up period it is not recommended to perform recalibration.

5. Description

5.1. Front panel



On the front panel there are located all main control keys, display and output terminals.

Keyboard

Numerical values can be entered from the numerical part of keyboard. Keys with number 2, 4, 6, 8 have also next meaning as display cursor keys. Except numerical there are following keys in the keyboard:

Key	Meaning
MENU	enters to the SETUP/CALIBRATION MENU.
BSP	deletes last entered number.
ESC	cancels last entered value or leaves last set mode
ENTER	confirms set value or confirms selected item in MENU or switches between numerical function (black label) and display cursor function (blue label) of the keys 2, 4, 6, 8. Switching over is indicated with symbol (↑) in right low corner of the display.
POWER	switches on and off the decade. When switching off is requested, two-times the key must be pushed to confirm switching off.

Display

Two-row alphanumeric display is used for displaying all information. Main value, i.e. simulated temperature or output resistance is displayed in upper row. Auxiliary information is displayed in lower row. Depending on status following symbols can be displayed in right low corner:

- ↑ - keys 2, 4, 6 and 8 are switched to the cursor function (blue labels are valid)
- ☐ - decade is in remote control via RS232 (IEEE488 optionally)
- ☐ - internal battery is out of power
- ⚡ - power line adapter is connected

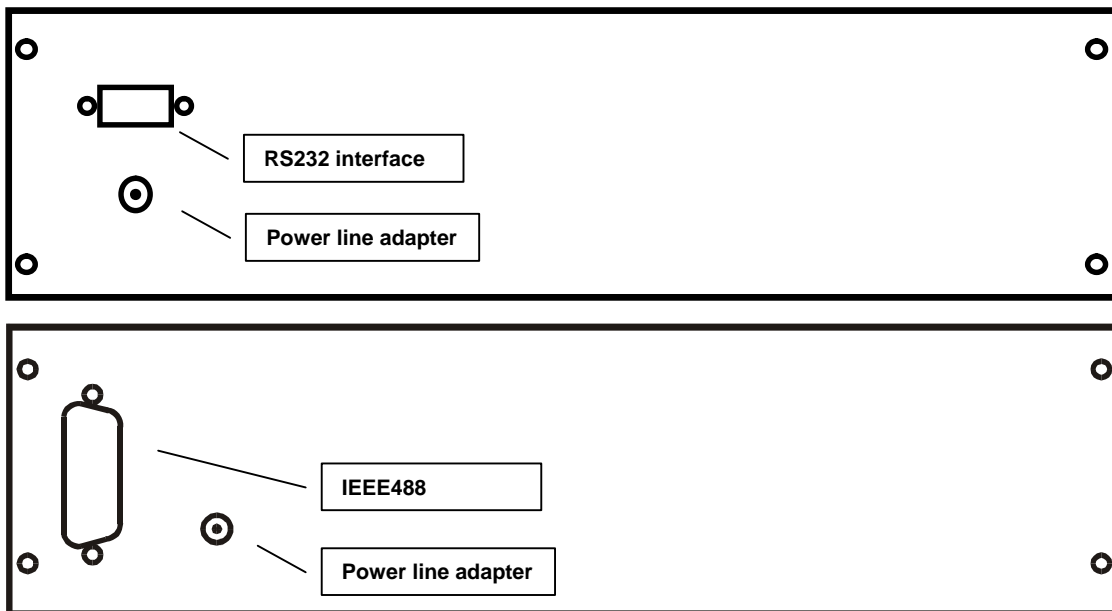
Output terminals

Output resistance is available on R output terminals. Available is 2, 3 and 4-wire connection. Left terminal with symbol "GROUND" is connected with the housing.

Note:

During operation the GROUND terminal should be connected to the ground or Lo terminal of measuring instrument. This connection prevents against interference with power supply voltage.


5.2. Rear panel



On the rear panel there are located power supply connector, interface RS-232 connector (optionally IEEE488 connector) and serial number plate.

6. Operation

6.1. Switch on and off

Decade is switched on by pushing the key POWER. To switch off the decade, push the same key two times. When supplied from internal battery, decade is automatically switch off, if for last 20 minutes no one key was pushed or if internal battery is discharged. One minute before automatic switching off, decade displays symbol  and beeps to warn the user.

6.2. Decade connection

Output resistance is available on R output terminals. Available is 2, 3 and 4-wire connection. Left terminal with symbol “GROUND” is connected with the housing. Ground terminal should be connected to the ground (or Lo) terminal of measuring instrument.

6.3. Standard mode – numerical keyboard

After switching on decade comes to standard mode. Following information is shown on the display:

```

-100.000 °C
Pt100    IPTS68

```

In the upper row actually simulated temperature [$^{\circ}\text{C}$] or generated resistance [Ω] is displayed. In the lower row type of simulated temperature sensor (Pt100), set-up temperature scale IPTS68, ITS90 according to the IEC751 standard or US according to the US/JIS standards are displayed. After pushing MENU key, SETUP function is activated.

6.4. Standard mode – cursor keyboard

After pushing “ENTER” key in numerical mode the decade change the display to the cursor mode. Following information is shown on the display:

```

-100.000 °C
Pt100    IPTS68 †

```

Arrow symbol in right corner informs, that cursor function of keys 2, 4, 6, 8 is initialized (blue signs on front panel foil). Buttons \uparrow \downarrow enable step up or down number on active position. With buttons \leftarrow \rightarrow active position of cursor can be moved left or right. With ENTER key can be switched between cursor and numerical keyboard in this mode. After pushing the key MENU, SETUP function is activated.

Numerical keyboard

With numerical keys value of temperature (or resistance) can be directly entered. Recently entered value is displayed in brackets under the actually set value. To confirm new value push the key ENTER.

```

-100.000 °C
[ 162.8    ]

```

Pushing the key ENTER switches keys 2, 4, 6, 8 function between cursor and numerical. Press ESC key to exit setting value from numerical keyboard mode. BSP key deletes last entered number.

6.5. Setup mode

This mode enables to set or display some auxiliary parameters. To enter this mode push the key



MENU in standard mode. To leave setup mode push the key ESC. With cursor keys \uparrow \downarrow following items in setup menu can be displayed:

Function

With buttons \leftarrow \rightarrow following functions can be set-up:

- R - resistance function. Total range of resistance is 10 Ω to 300 k Ω (0.1 Ω to 10 M Ω).
- Pt (68) - simulation of Pt temperature sensors according to standard IEC 751 (temperature scale IPTS68, coefficient 1,3850). Range of setting -200 $^{\circ}\text{C}$ to 850 $^{\circ}\text{C}$ (-328 $^{\circ}\text{F}$ to 1562 $^{\circ}\text{F}$). Parameter R0 (resistance at 0 $^{\circ}\text{C}$) can be set-up in range 10 Ω to 20 000 Ω .
- Pt (90) - simulation of Pt temperature sensors according to standard IEC 751 (temperature scale ITS90, coefficient 1,3851). Range of setting -200 $^{\circ}\text{C}$ to 850 $^{\circ}\text{C}$ (-328 $^{\circ}\text{F}$ to 1562 $^{\circ}\text{F}$). Parameter R0 (resistance at 0 $^{\circ}\text{C}$) can be set-up in range 10 Ω to 20 000 Ω .
- Pt (US) - simulation of Pt temperature sensors according to standard US/JIS (temperature scale ITS90, coefficient 1,3851). Range of setting -200 $^{\circ}\text{C}$ to 850 $^{\circ}\text{C}$ (-328 $^{\circ}\text{F}$ to 1562 $^{\circ}\text{F}$). Parameter R0 (resistance at 0 $^{\circ}\text{C}$) can be set-up in range 10 Ω to 20 000 Ω .
- Ni - simulation of Ni temperature sensors according to standard DIN 43760 (coefficient 6180). Range of setting -60 $^{\circ}\text{C}$ to 300 $^{\circ}\text{C}$ (-76 $^{\circ}\text{F}$ až 572 $^{\circ}\text{F}$). Parameter R0 (resistance at 0 $^{\circ}\text{C}$) can be set-up in range 10 Ω to 20 000 Ω .
- User - by user defined temperature function. As default, NTC thermistor sensor with temperature function

$$R(T) = 330 \cdot \exp(-4050 \cdot ((1/298,15) - (1/(T+273,15))))$$
 is delivered. Range of simulation is -30 $^{\circ}\text{C}$ to 110 $^{\circ}\text{C}$.
 This function can be changed in MEATEST Company only (extra ordered option).
 Please specify in your order.
- Short - simulates short on the output terminals. Function Short is extra ordered option.
- Open - simulates open on the output terminals. Function Open is extra ordered option.

Items from MENU are displayed on lower row. After selecting an item and pressing the button ENTER, symbol of this new selected temperature/resistance function is written to upper row. Selected function is valid even if the instrument is switched off and on again (except of Short and Open functions).

R0 (Pt,Ni) (resistance at 0 $^{\circ}\text{C}$)

The function enables to set-up parameter R0 for temperature sensors. Set value R0 is valid for both Pt and Ni sensors. New value can be written after changing keyboard meaning to numerical by pushing ENTER. Allowed range is from 100 to 2000 (10 to 20000 for M602A version). To confirm new value press ENTER. New value is valid even if the instrument is switched off and on again.

T. unit (temperature unit)

With buttons ← → either °C or °F can be set-up here. Possibilities are shown in lower row. After selecting one of them and pressing the button ENTER appropriate symbol is written to upper row. New value is valid even if the instrument is switched off and on again.

Volume

With keys ← → values OFF (beep off), LOW (volume low) or HIGH (volume high) can be set. Selected parameter is displayed in lower row. To change currently selected parameter press ENTER key. The newly set parameter is written into the upper row.

Baud rate RS-232 (optionally IEEE488 address)

In standard version, the function involves to set parameter baud rate of RS-232 interface. With keys ← → any value from the row 300, 600, 1200, 2400, 4800, 9600 or 19200 Bd can be set. Set baud rate is displayed in lower row. To change currently valid value to the new value press the key ENTER. The newly set baud rate is written into the upper row.

If the decade is optionally equipped with IEEE488, instead of “Baud rate” you can set IEEE488 address of instruments.

In decade with IEEE488 interface, IEEE488 address can be set-up here. The address range is 0 to 30. The last set baud rate is valid even if the instrument is switched off.

Lightning

Enables or disables lightning of the display. With keys ← → values OFF (lightning is switched off), 30 s (lightning is switched on for 30 s after last key pressing), 5m (lightning is switched on for 5 minutes after last key pressing) or ON (lightning is switched on) can be set. Selected parameter is displayed in lower row. To change currently selected parameter press the key ENTER. The newly set parameter is written into the upper row.

If the instrument is supplied from the external power adapter, lightning is switched on permanently.

Note: Display lightning influences significantly operating period from the internal battery. If not used when instrument is supplied from internal battery, the working period can be lengthen about 50%.

Calibration mode password setting

Calibration password is a five-digit number, which must be entered to access the calibration mode. If the password is set to “00000”, this information is displayed in the Setup menu, otherwise only symbols “*****” are shown.

Password can be changed. New password can be entered directly from keyboard after changing keyboard meaning to numerical by pushing ENTER. If previous password was “00000”, simply type new 5-digit code and press ENTER. New password is saved and cannot be read in MENU. If previous password was non-zero, new password can be entered in two steps. In the first step original password must be entered and confirmed by pressing ENTER. If it is correct symbols “00000” are displayed. Now new password can be entered and saved according to above described procedure.

New password is valid even if the instrument is switched off and on again.

Note: it is advisable to write down actual password if changed. If you forget the calibration code, you have to send the decade to the manufacturer.

Serial number

Displays the serial number of the decade. The parameter cannot be changed.

Write startup

Enables to define state that is set after switching the decade on. The instrument writes to the memory the actual state (function and value) after pushing ENTER key.

Cancel startup

Clears defined "Startup state". Instrument returns to standard mode when after switching the power on decade sets value 100 Ω (100 °C).

6.6. Calibration mode

In this mode resistance elements of the decade can be recalibrated. Access to the calibration mode is enabled after double pushing the key MENU from the standard mode or after single pushing the same key from the SETUP mode.

Correct password must be entered before calibration. Without correct password the access to the calibration mode is refused. Default factory set calibration code is "00000". Return to standard mode is possible after pushing the key ESC.

Enter Password :
00000

Recalibration procedure consists of measuring of 36 basic resistance values and entering their actually measured data. Among calibration values can be moved with keys $\uparrow \downarrow$.

In following table nominal values of calibration points and requested recalibration accuracy are described:

Standard (terminals)	Nominal value	Requested Accuracy
R00	190 mW	4 mW
R01	370 mW	4 mW
R02	720 mW	4 mW
R03	1,38 W	4 mW
R04	2,66 W	4 mW
R05	5,15 W	4 mW
R06	9,99 W	5 mW
R07	19,4 Ω	6 m Ω
R08	38,3 Ω	8 m Ω
R09	75,5 Ω	10 m Ω
R10	149 Ω	20 m Ω
R11	294 Ω	15 m Ω
R12	580 Ω	25 m Ω
R13	1140 Ω	50 m Ω
R14	2240 Ω	100 m Ω
R15	4410 Ω	200 m Ω
R16	8700 Ω	400 m Ω
R17	17,2 k Ω	1 Ω
R18	33,8 k Ω	5 Ω
R19	66,5 k Ω	10 Ω

R20	131 kΩ	20 Ω
R21	258 kΩ	50 Ω
R22	509 kΩ	100 Ω
R23	1000 kΩ	200 Ω
R24	2000 kΩ	500 Ω
R25	3900 kΩ	1000 Ω
R26	7500 kΩ	5 kΩ
R27	15 MΩ	20 kΩ
R28	30 MΩ	100 kΩ
R29	60 MΩ	500 kΩ
R30	118 MΩ	2 MΩ
<i>R31</i>	<i>3400 W</i>	<i>200 mW</i>
<i>R32</i>	<i>7500 W</i>	<i>400 mW</i>
<i>R33</i>	<i>15,4 kW</i>	<i>800 mW</i>
<i>R34</i>	<i>37,0 kW</i>	<i>1600 mW</i>
<i>R35</i>	<i>73,6 kW</i>	<i>3 W</i>
<i>R36</i>	<i>147 kW</i>	<i>6 W</i>
<i>R37</i>	<i>296 kW</i>	<i>12 W</i>
<i>R38</i>	<i>616 kW</i>	<i>30 W</i>
<i>R39</i>	<i>1230 kW</i>	<i>60 W</i>
<i>R40</i>	<i>2470 kW</i>	<i>200 W</i>
<i>R41</i>	<i>5000 kW</i>	<i>400 W</i>

Notes:

- Blue values written in italic are for M602A version only.
- Resistances R07 to R14 should be calibrated before resistances R31 to R41. There is a small dependency between these values.

Process of calibration consists of measuring partial resistances and writing their actual values into the decade:

- Set the first calibration point (resistance element). Use keys $\uparrow \downarrow$ to set the element.
- Measure resistance of the selected element. Use ohm-meter with appropriate accuracy in 4-wire connection and with appropriate accuracy.
- Change function of the keyboard to the numerical one by pushing the key ENTER.
- Write measured resistance value (there is original value in the first row and newly entered value in the second row). Newly entered value must be written down in units Ohm.

R07	19.20000 Ω
	19.2810

- Confirm new calibration data by pushing the key ENTER.
- Repeat above described procedure for all resistance elements.

7. Performance verification test

Parameter verification procedure is described in the chapter. Verification procedure is based on measuring resistance on the decade output terminals with standard multimeter in recommended points.

Required equipment

- Ohm-meter nominal accuracy 0.005% in range 200 m Ω to 10 M Ω (type HP34401A or KE2000)

Decade setting

Switch decade to the resistance function. Connect standard multimeter to the decade output terminals. Use four-wire connection technique.

Range of the test

- output resistance on terminals R checking

Procedure

Use following procedure to perform parameter verification test.

1. Switch both instruments on and let them for 1 hour stabilise in the laboratory with ambient temperature 23 ± 2 °C. Connect resistance decade terminals R4W to the standard ohm-meter (multimeter).
2. Case of decade should be grounded or connected to the Lo terminal of multimeter.
3. Check resistance value in points according to Table I.

Maximal deviations M602

Nominal value [Ω]	Max. deviation [m Ω]
19	0.025
36	0.033
70	0.050
140	0.085
250	0.050
500	0.100
1000	0.200
2000	0.400
4000	0.800
8000	1.6
16000	8
30000	15
60000	60
120000	600
250000	1250

Maximal deviations M602A

Nominal value [Ω]	Max. deviation [$m\Omega$]
0.18	0.015
0.3	0.015
0.7	0.015
1.3	0.016
2.5	0.016
5.0	0.018
9.5	0.020
19	0.025
36	0.033
70	0.050
140	0.085
250	0.050
500	0.100
1000	0.200
2000	0.400
4000	0.800
8000	1.6
16000	3.2
40000	8
80000	16
150000	30
300000	60
700000	140
1500000	300
3000000	1500
6000000	3000

8. Remote control

Standard version is equipped with RS232 bus. IEEE488 version is described in chapter 8.4. Commands for both versions are the same.

8.1. Commands

Communication between decade and computer consists of flow of periodically alternating commands type command-response or query-response. Command is always a letter followed by parameter and ended by control sign <cr> or <lf>. Response is always ended with control signs <cr> <lf>.

Syntax description

- <DNPD> = Decimal Numeric Program Data, this format is used to express decimal number with or without the exponent.
- <CPD> = Character Program Data. Usually, it represents a group of alternative character parameters. E.g. {0 | 1 | 2 | 3}.
- ? = A flag indicating a request for the value of the parameter specified by the command. No other parameter than the question mark can be used.
- (?) = A flag indicating a request for the parameter specified by the command. This command permits a value to be set as well as requested.
- <cr> = carriage return. ASCII code 13. This code executes the program line.
- <lf> = line feed. ASCII code 10. This code executes the program line.

8.2. Command list

Value setting / reading

A (?) <DNPD>

The command sets resistance value (resistance function) or temperature value (temperature sensor simulating function).

<DNPD>

It represents resistance value in Ohm or simulated temperature in °C. When temperature parameter is used, both negative and positive values are acceptable. For resistance parameter positive value only is acceptable. Limit values are shown in chapter "Technical data".

In case of control, the decade confirms correct setting with string „Ok <cr><lf>”.

In case of query, M-602 returns set resistance/temperature value in the same format as it is on the display (number of decimal places). For example value -120 °C is returned as -120.000<cr><lf>. Positive numbers are sent without polarity sign.

Example :

Command „A123.564 <cr>” sets temperature 123.564 °C if decade is in temperature simulation function and 123.564 Ω if decade is in resistance function.

If query „A?<cr>” is sent, decade returns response in format „123.564<cr><lf>”.

Decade function setting

F <CPD> { 0 | 1 | 2 | 3 | 4 | 5 | S | O }

Following function can be set:

- 0 resistance mode
- 1 Pt (68) temperature sensor simulation
- 2 Pt (90) temperature sensor simulation
- 3 Pt (US) temperature sensor simulation
- 4 Ni temperature sensor simulation
- 5 User temperature sensor simulation
- S Short simulation (extra ordered option)
- O Open simulation (extra ordered option)

M-602 confirms execution with string „Ok <cr><lf>”.

Example :

„F1<cr>” sets Pt100 sensor simulation.

I/D (device identification)

***IDN?**

Response contains name of manufacturer, model type number, serial number, firmware version

Example :

If query „*IDN?<cr>” is sent, decade returns response:

„MEATEST,M602A,462351,2.4 <cr><lf>“.

Switching off

P0

The command will switch the decade off. The command is executed if decade is supplied from internal battery only. Correct execution is confirmed with string „Ok <cr><lf>”.

Example :

„P0<cr>” switches decade off (if not used external power adapter).

R0 setting / reading

R (?) <DNPD>

Command sets resistance value R0 at temperature 0 °C. Set value R0 is valid for all types of simulated temperature sensors.

<DNPD>

It represents resistance value R0 in Ω . Limits are shown in chapter Technical data. M-602 confirms execution with string „Ok <cr><lf>”. In case of query M-602 returns set value in Ω .

Example :

„R100 <cr>” sets value R0 to 100 Ω (Pt100, Ni100).

After query „R?<cr>” decade returns string „100<cr><lf>”.

Temperature unit setting**U <CPD> { 0 | 1 }**

Command sets used temperature unit.

- 0 sets degree Celsius °C
- 1 sets degree Fahrenheit °F

M-602 confirms execution with string „Ok <cr><lf>”.

Example :

„U0<cr>” sets °C as temperature unit.

Status reading**V?**

M-602 returns device status in form „FxUx <cr><lf>“. On positions of signs „x“ there are values corresponding to the actual status of decade.

Example :

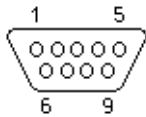
After query „V?<cr>” decade returns for example string „F2U0<cr><lf>”, which means Pt (90), °C actual setting.

When unknown command is received M-602 returns string "? <cr><lf>“. Correctly executed command is confirmed with string "Ok <cr><lf>. When correct query is received M-602 returns response in above described format. All commands must contain sign <cr> or <lf> at the end. Both small and large letters can be used.

8.3. Remote control RS232

Transmission baud rate can be selected from 300 to 19200 Bd. Number of data bits is 8, number of stop bits is 1, parity is not used. For data flow control neither hardware handshake (RTS/CTS) nor program handshake (XON/XOFF) is used. RS 232 line is from other electronic circuits galvanically isolated

RS-232 connection



Pin	Label	I/O	Description
2	TXD	output	Transmitter
3	RXD	input	Receiver
5	GND	-	Ground

9 pin connector D-SUB MALE

Cable between decade and computer description (configuration 1:1)

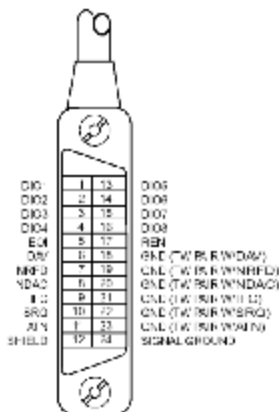
Computer	D-Sub 1	D-Sub 2	M-622
Receiver	2	2	Transmitter
Transmitter	3	3	Receiver
Ground	5	5	Ground

8.4. Remote control IEEE488 (optionaly)

The list of commands is valid for version of decade with IEEE488 interface.

The instrument performs the following functions based on IEEE488 bus commands:

SH1, AH1, T5, L3, RL1, DC1



The instrument also recognizes the following general commands:
 DCL Device Clear - resets the instrument to its basic state
 SDC Selected Device Clear - resets the instrument to its basic state
 GTL Go To Local - switches the remote control off
 LLO Local Lock Out - switches the local control off, the instrument cannot be controlled from the front panel

Commands are identical to the commands for RS-232 interface. Detailed description is shown in chapter 8.2.

8.5. Demo program

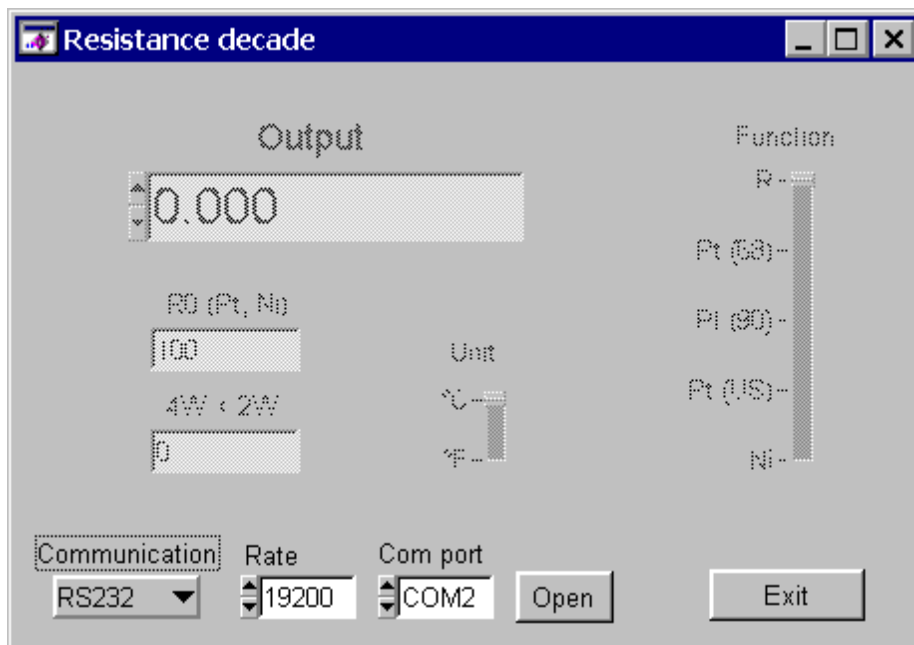
A simple operating program is supplied with the decade in order to provide easy operation of the instrument from the computer, and to check the RS-232 line (IEEE488 bus) of the instrument. The installation CD ROM contains a program (for WIN95/98/ME/NT/2000/XP/Vista only), you can communicate with the instrument through standard serial line (IEEE488) with. For example, you can set value or function on the decade. For IEEE488 connection this Demo program requires properly configured National Instruments IEEE488 card.

Installing the program

Insert the software CD into your CD ROM drive. Wait for autorun and select “Software installation” and “M602/M622” or start direct „install\freeware\M602_622\en\setup.exe“. When you launch SETUP.EXE, the installation program asks for the destination directory (pre-defined is R Decade) and executes the actual installation. The UNINST.EXE program is also copied into the selected directory for alternative delete of the directory from the system.

Program description

When you launch “R decade” program, following control panel is displayed on the screen.

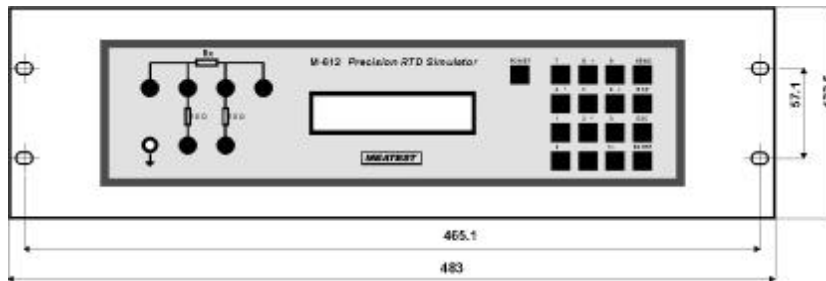


First use operating element „Communication“ to select appropriate interface (RS232 or IEEE488). Standard is RS232 line. For RS232 you have to set the serial port number to which the instrument is connected and the baud rate. For IEEE488 you have to set IEEE488 address only. After pushing “Open” button the program checks if the instruments is connected. If the instrument is found you can control it. Output value can be set by typing requested value to window “Output” or with mouse by activating arrows up or down.

You can end the program at any time by pressing the “Exit” button.

9. Module 19" (version M602-Vxx1x)

Decade can be ordered as 19" module for easy assembling into a 19" rack. Module height is 3HE.



10. Table version with holder (version M602-Vxx2x)

Decade can be also ordered in table version with the holder.



11. Electric function

Resistance elements are switched to the output terminals through reed relays in binary code system. The relays used are types with low thermoelectric voltage. The resistors are metal type with low temperature coefficient. Metal housing is connected to the ground terminal only. The board with resistors and relays creates independent mechanical block.

CPU unit with one-chip micro-controller generates all necessary internal control signals. Calibration data and set-up parameters are saved in EEPROM memory.

12. Mechanical construction

Decade housing is standardised aluminium type one. Keyboard with display and output terminals are located on the front panel. External power supply connector and RS-232 connector are located on the rear panel. Internal battery is fixed to the rear panel inside the housing.

12.1. Battery maintenance (version M602-Vxxx1)

Period for fully battery charging is approx. 40 hours. If the instrument has been stored for more than 3 months without connected external power line adapter, battery should be charged.

12.2. Battery replacement (version M602-Vxxx1)

Internal battery is sealed lead-acid maintenance-free long-life rechargeable battery with voltage 12V and capacity 2.6Ah.

To replace battery use following procedure:

- Disconnect external power supply adapter and RS-232 (IEEE488) cable.
- Switch decade off.
- Dismount 4 screws located in the corners of the rear panel.
- Remove slightly top cover.
- Disconnect connectors from the battery and dismount metal belt to release battery.
- Replace battery pack.
- Connect fresh battery and mount it into the case in opposite procedure.

13. Ordering information – options

M602-Vxxxx - basic version (10 Ω - 300k Ω)
M602A-Vxxxx - extended version (0.1 Ω - 10M Ω)

Bus

M602-V1xxx - RS232
M602-V2xxx - IEEE488

Additional functions

M602-Vx0xx - none
M602-Vx1xx - Short/Open function

Housing

M602-Vxx0x - table version
M602-Vxx1x - module 19[“], 3HE
M602-Vxx2x - table version with holder

Power supplying

M602-Vxxx0 - power line adaptor
M602-Vxxx1 - battery + power line adaptor

Example of order:

M602A-V2110 - resistance decade 0.1 Ω - 10M Ω , IEEE488, Short/Open, 19[“] rack, without battery

Manufacturer

MEATEST, s.r.o.
Železná 509/3, 619 00 Brno
Czech Republic
www.meatest.com

tel: +420 – 543 250 886
fax: +420 – 543 250 890
meatest@meatest.cz